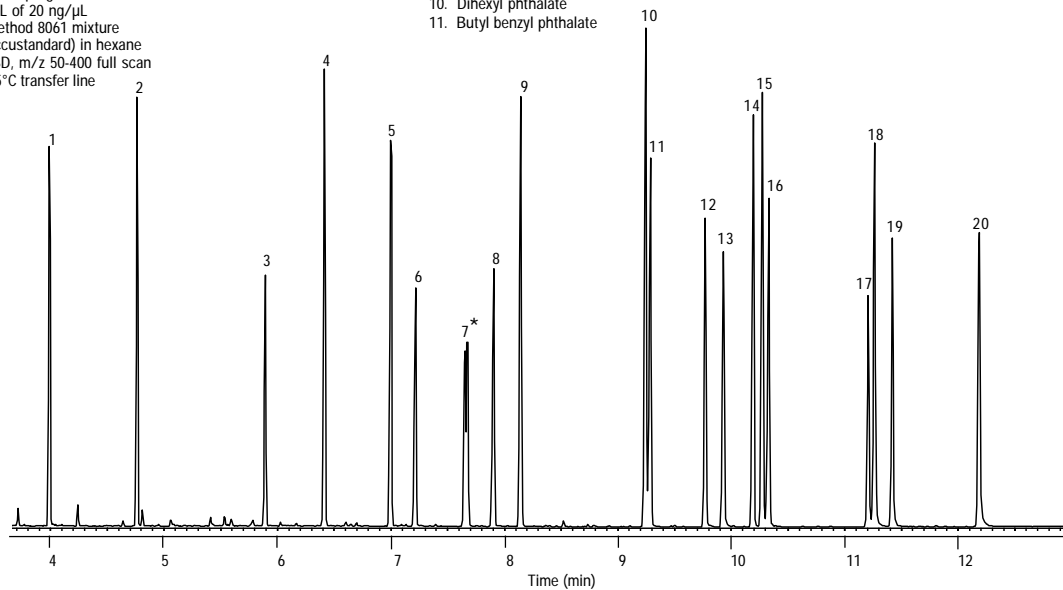


EPA Method 8061 (Phthalate Esters)

Column: DB-5ms
20 m x 0.18 mm I.D., 0.18 μ m
J&WP/N: 121-5522
Carrier: Helium at 49 cm/sec
(measured at 80°C),
constant flow program
Oven: 80°C for 0.5 min
80°-160°C at 30°/min
160-320°C at 15°/min
Injector: Splitless, 300°C
30 sec purge activation time
1 μ L of 20 ng/ μ L
Method 8061 mixture
(Accustandard) in hexane
Detector: MSD, m/z 50-400 full scan
325°C transfer line

- | | |
|---|------------------------------------|
| 1. Dimethyl phthalate | 12. Hexyl 2-ethylhexyl phthalate |
| 2. Diethyl phthalate | 13. Bis(2-n-butoxyethyl) phthalate |
| 3. Benzyl benzoate (IS) | 14. Dicyclohexyl phthalate |
| 4. Diisobutyl phthalate | 15. Bis(2-ethylhexyl) phthalate |
| 5. Di-n-butyl phthalate | 16. Diphenyl phthalate (SURRE) |
| 6. Bis(4-methoxyethyl) phthalate | 17. Diphenyl isophthalate (SURRE) |
| 7. Bis(4-methyl-2-pentyl)
phthalate *Two isomers | 18. Di-n-octyl phthalate |
| 8. Bis(2-ethoxyethyl) phthalate | 19. Dibenzyl phthalate (SURRE) |
| 9. Diamyl phthalate | 20. Dinonyl phthalate |
| 10. Dihexyl phthalate | |
| 11. Butyl benzyl phthalate | |



C730