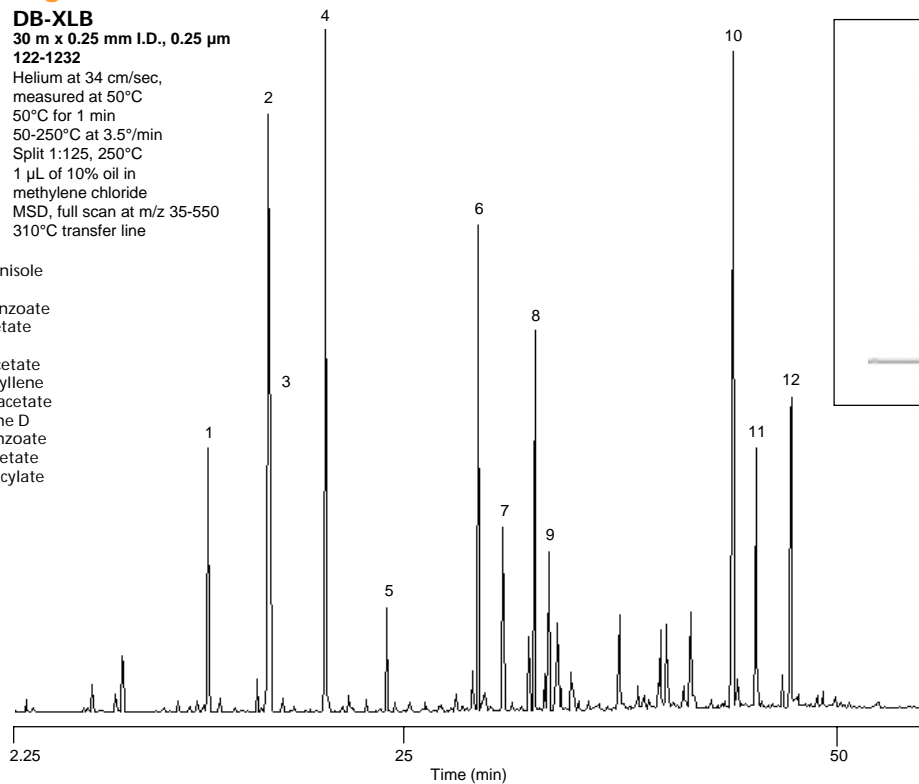


## Ylang Ylang Oil

**Column:** DB-XLB  
30 m x 0.25 mm I.D., 0.25  $\mu$ m  
**J&W P/N:** 122-1232  
**Carrier:** Helium at 34 cm/sec,  
measured at 50°C  
**Oven:** 50°C for 1 min  
50-250°C at 3.5°/min  
**Injector:** Split 1:125, 250°C  
1  $\mu$ L of 10% oil in  
methylene chloride  
**Detector:** MSD, full scan at m/z 35-550  
310°C transfer line

1. *p*-Methylanisole
2. Linalool
3. Methyl benzoate
4. Benzyl acetate
5. Geraniol
6. Geranyl acetate
7.  $\beta$ -Caryophyllene
8. Cinnamyl acetate
9. Germacrene D
10. Benzyl benzoate
11. Fanesol acetate
12. Benzyl salicylate



C577

new  
new