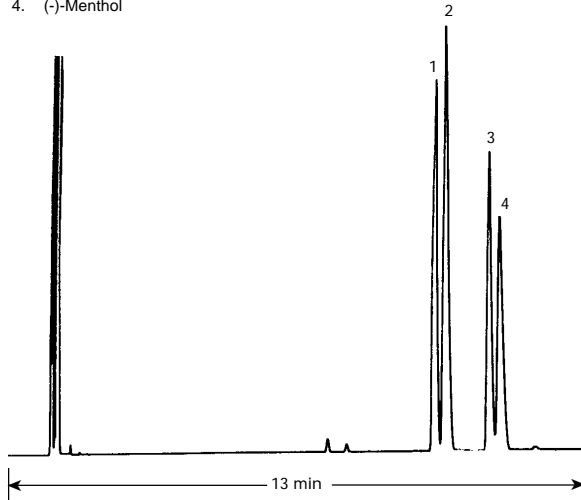


Menthol

Column: Cyclodex-B
30 m x 0.25 mm I.D., 0.25 μ m
J&W P/N: 112-2532
Carrier: Hydrogen at 55 cm/sec
Oven: 105°C isothermal
Injector: Split 1:100, 250°C
1 μ L of 1 μ g/ μ L each in chloroform
Detector: FID, 300°C
Nitrogen makeup gas at 30 mL/min

1. (+)-Neomenthol
2. (-)-Neomenthol
3. (+)-Menthol
4. (-)-Menthol



C082